



WE BELIEVE

The CROWN will transform Cincinnati into a leading destination to live, work and play by linking our regional trail network and reconnecting our neighborhoods.





Photo credit: City of Cincinnati

CROWN is our legacy for the 21st century.

CROWN is led by a public/private partnership to build a trail network connecting neighborhoods, parks, colleges, museums, and downtown.



1817

Piatt Park is donated to the City of Cincinnati

1907

George Kessler creates the City's first park plan

1930

Hamilton County Park District is created

2024

Scheduled completion for Wasson Way & Ohio River Trail



The CROWN trail network will...



Link trails and parks



Reconnect neighborhoods



Spur economic development



Attract and retain talent



Improve public health



Expand transportation options



Increase transportation equity

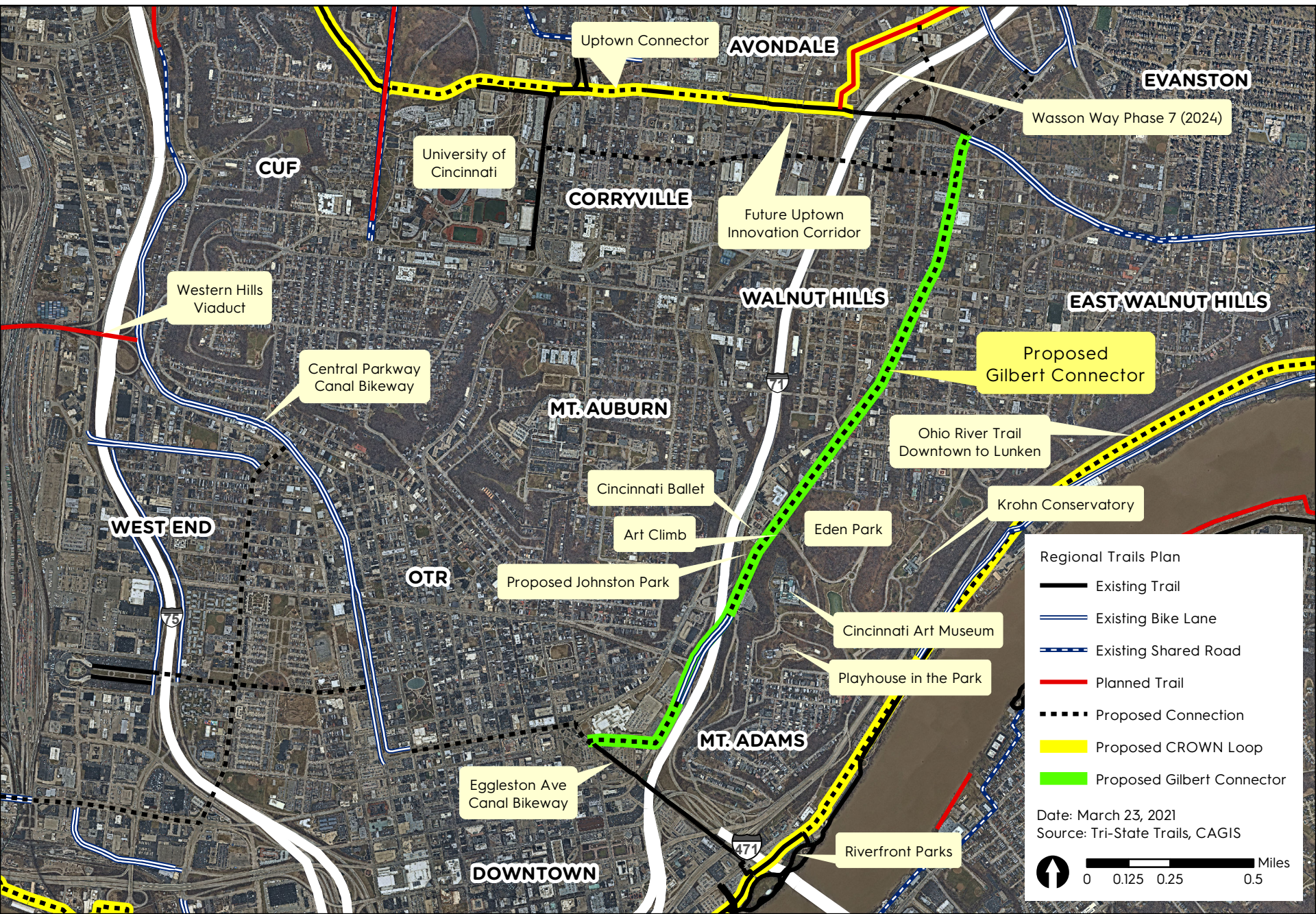


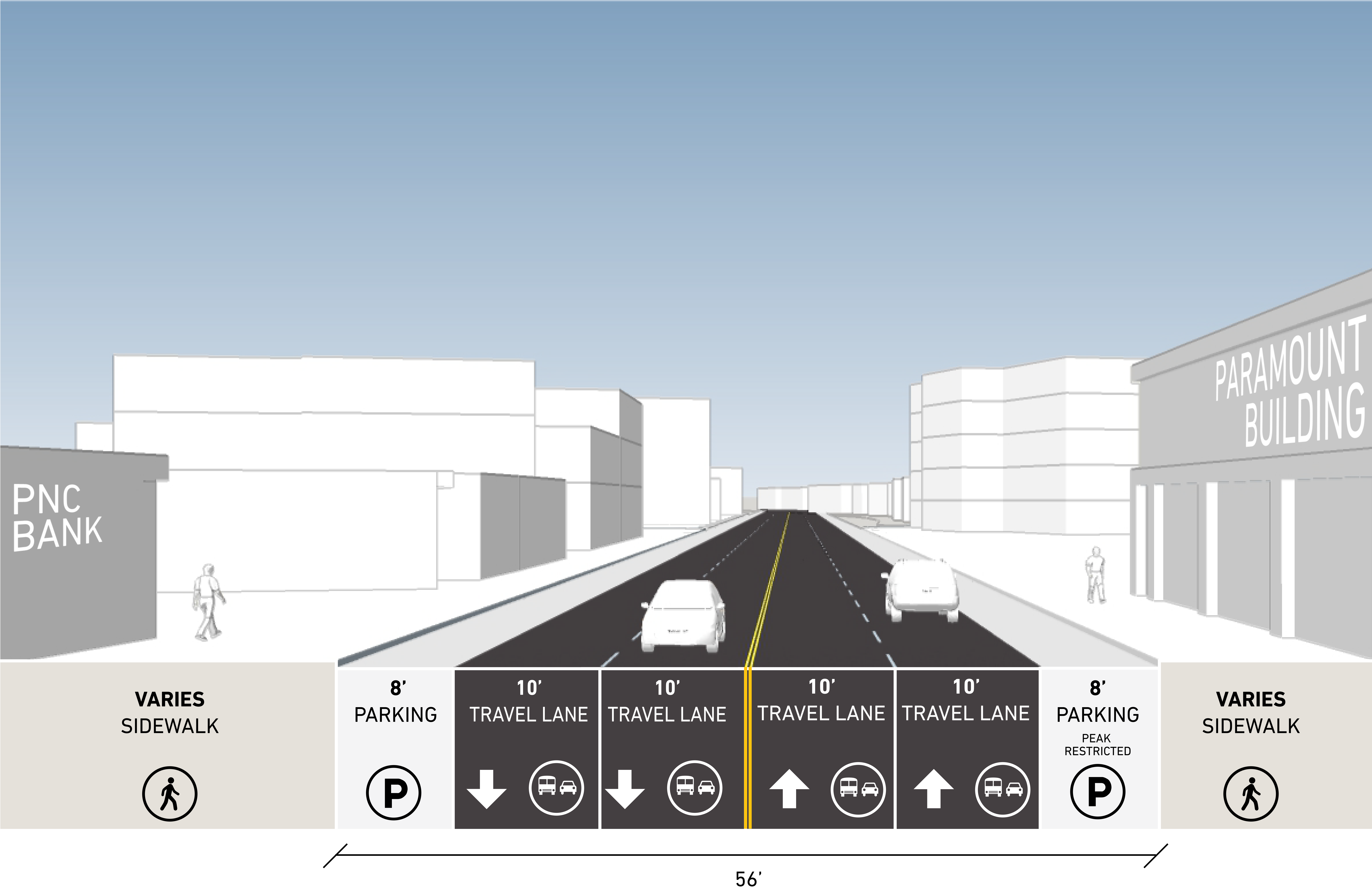
Promote environmental sustainability

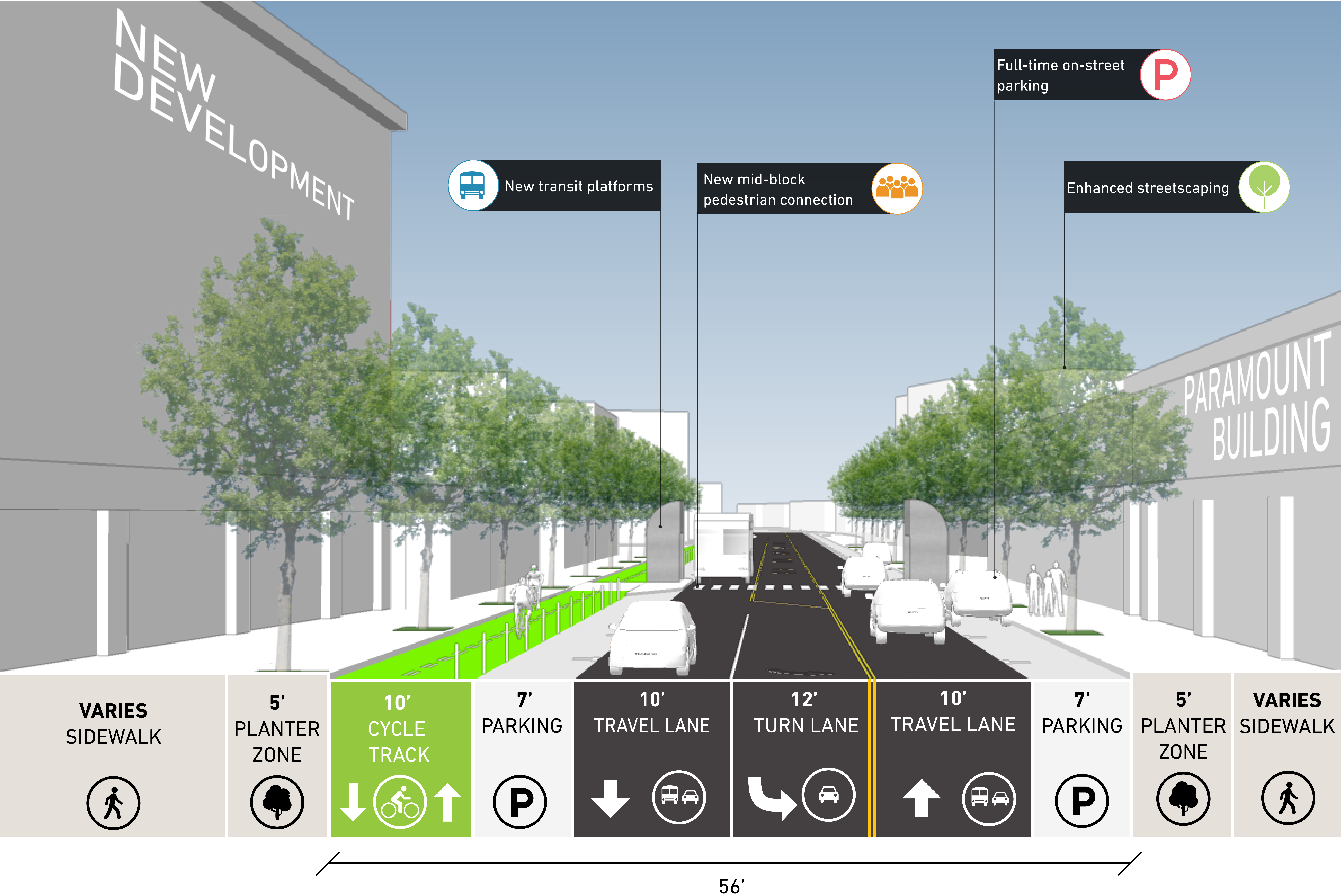


———— COMPLETED TRAILS	--- ① --- Wasson Way	⑥ Little Miami Scenic Trail	⑪ Canal Bikeway
----- CAPITAL CAMPAIGN	--- ② --- Uptown Connector	⑦ Gilbert Arts Connector	⑫ Ohio River Trail West
----- PLANNED TRAILS	--- ③ --- Little Miami Connector	⑧ Murray Path	⑬ Little Duck Creek Trail
===== BICYCLE LANES	--- ④ --- Ohio River Trail	⑨ Lunken / Armleder Trail	⑭ Lick Run Greenway
———— 34-MILE TRAIL LOOP	--- ⑤ --- Beechmont Connector	⑩ Mill Creek Greenway	⑮ Riverfront Commons

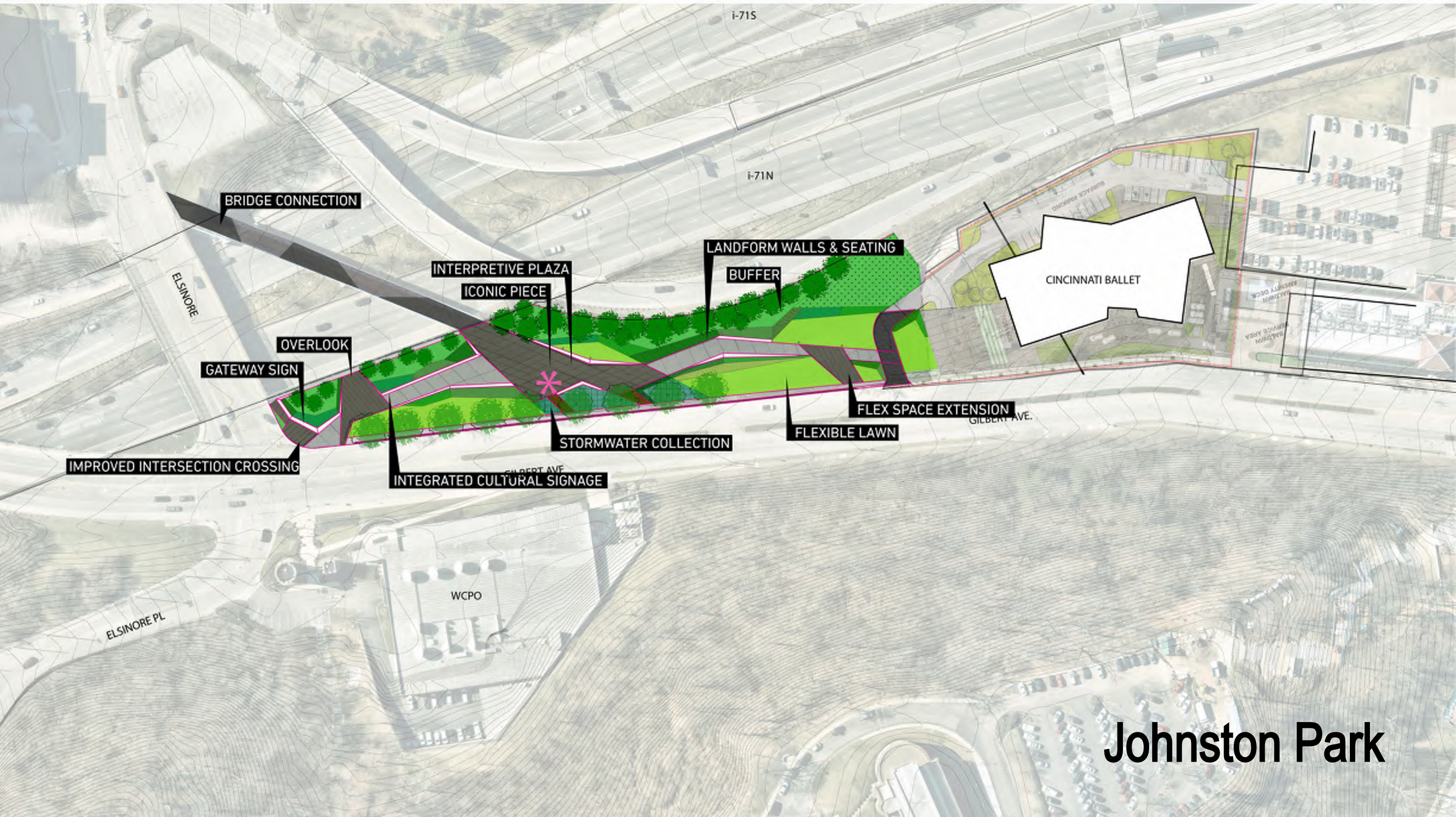
CROWN: Gilbert Connector







Site Plan



Johnston Park