

A photograph of Johnston Park in Cincinnati, Ohio. The image shows a paved path leading through a grassy area with several trees. The trees have green and some yellowing leaves, suggesting autumn. The path is bordered by grass and fallen leaves. In the background, there are more trees and a fence.

Johnston Park

Cincinnati, Ohio

Schematic Design Update Meeting | December 18, 2020

Today's Meeting

What we will be covering

00

Introduction

01

Context

02

Stakeholder
Input

03

Previous
Concept

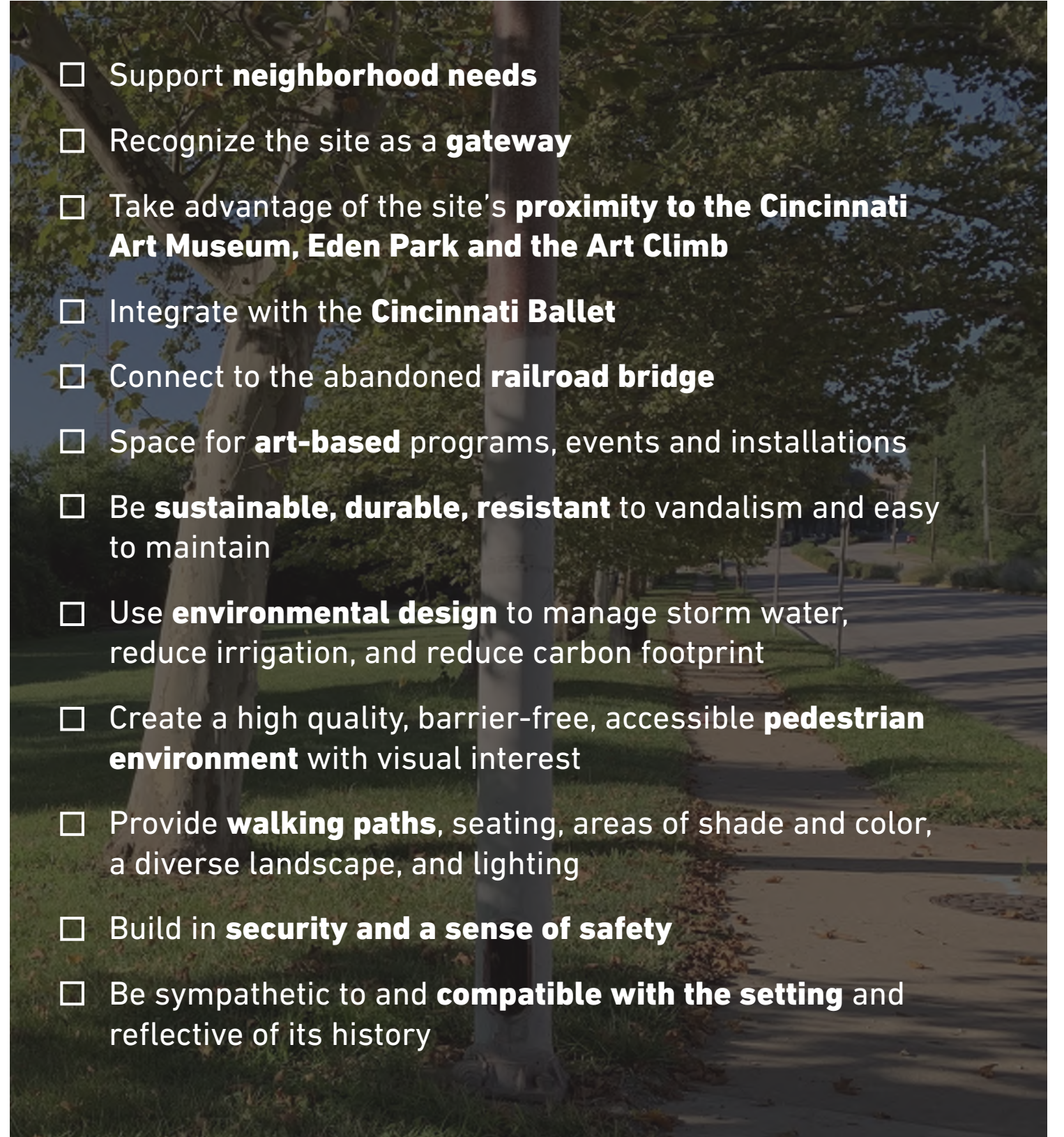
04

Design
Refinement

Design Objectives



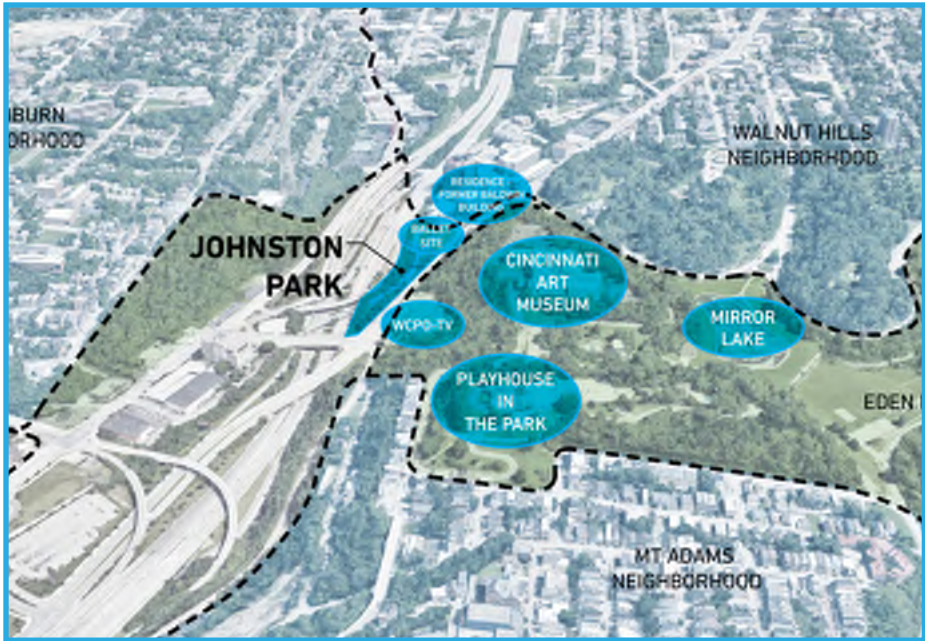
- ☐ Support **neighborhood needs**
- ☐ Recognize the site as a **gateway**
- ☐ Take advantage of the site's **proximity to the Cincinnati Art Museum, Eden Park and the Art Climb**
- ☐ Integrate with the **Cincinnati Ballet**
- ☐ Connect to the abandoned **railroad bridge**
- ☐ Space for **art-based** programs, events and installations
- ☐ Be **sustainable, durable, resistant** to vandalism and easy to maintain
- ☐ Use **environmental design** to manage storm water, reduce irrigation, and reduce carbon footprint
- ☐ Create a high quality, barrier-free, accessible **pedestrian environment** with visual interest
- ☐ Provide **walking paths**, seating, areas of shade and color, a diverse landscape, and lighting
- ☐ Build in **security and a sense of safety**
- ☐ Be sympathetic to and **compatible with the setting** and reflective of its history



01

Context

Previous Analysis



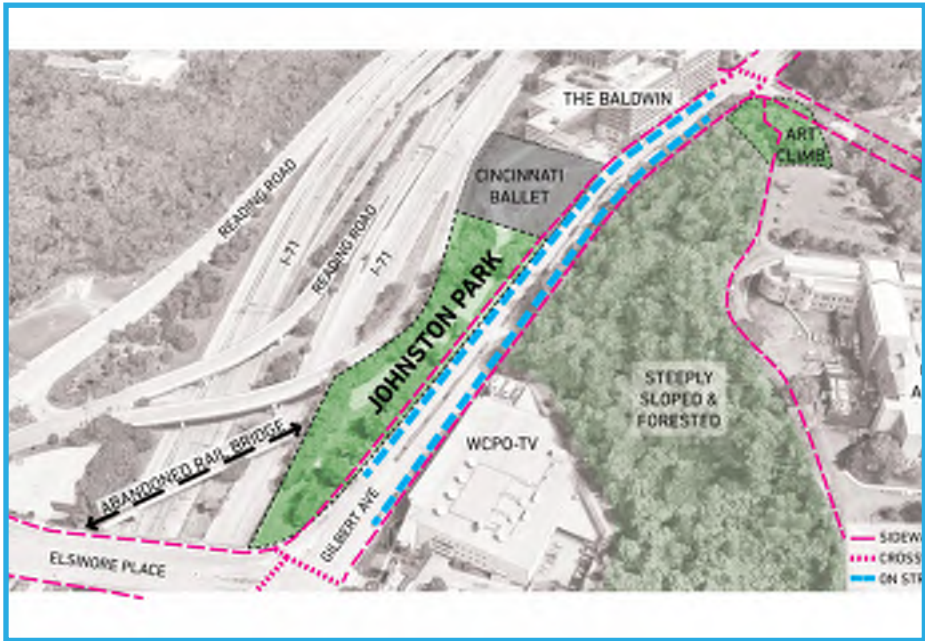
Adjacencies



Connections



Johnston Park Site



Direct Site Connections



Existing Assets



Site Challenges

Historic Site Context

Baldwin Piano Factory



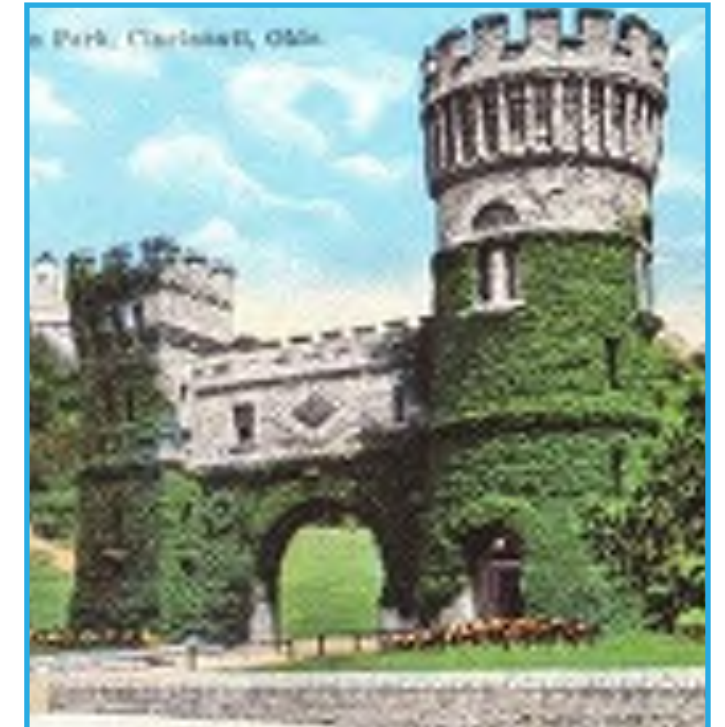
Cincinnati Art Museum



Railway Connection



Elsinore Arch



Historic Pictures of Site



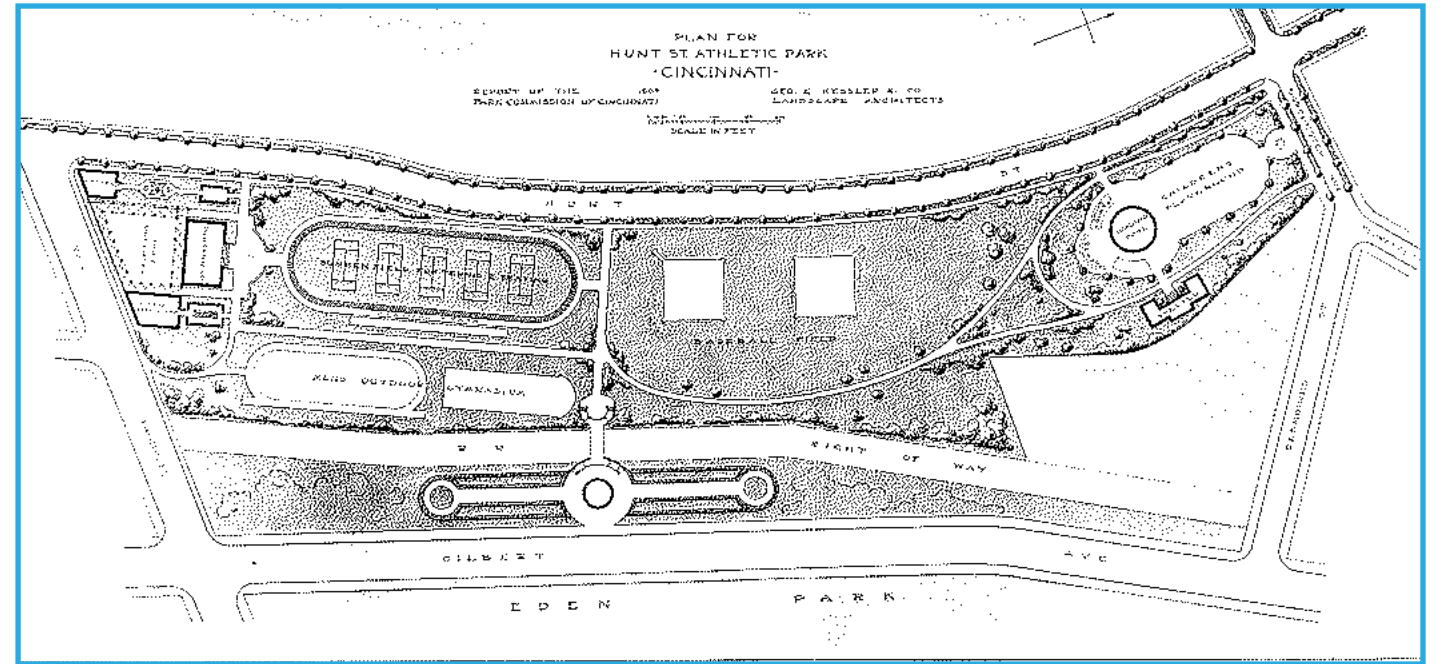
Historic Johnston Park



View north along Gilbert



Deer Creek Commons (1930's)



Hunt St. Athletic Park Plan (Kessler 1907)

02

Stakeholder
Input

What We Heard

Johnston Park should be a destination

- **Elevate it to destination status**
- **Inviting public space for families**, viewing events at Ballet facility, adjacent art exhibits/ walks from Eden Park
- **Views into/ out of park** important, linkages between Art Museum/ hilltop and the park could be an opportunity.
- **What is attracting people to the proposed park design?** Playground, art walk, performance space, interactive displays/ art, earth forms, etc. all ideas
- **Ballet and Art Museum** willing to partner with Parks to help program & activate the park.

Serve as a neighborhood gateway and connection

- **Design is opportune time** with addition of the Ballet Facility and Art Climb steps
- **Connections to adjacent neighborhoods** to be considered: Walnut Hills, Mt. Adams, Pendleton/ OTR and Mt. Auburn
- **Inventory adjacent stairway connections** to Art Museum, Prospect Hill across from Reading Road
- **Intersection of Elsinore and Gilbert seen as a gateway** into Walnut Hills, park could serve as a gateway opportunity, include wayfinding/ directional signage to adjacent institutions/ neighborhoods.
- **Railroad bridge connection to downtown** should be considered.

Make this an interactive park that is part of arts loop

- **What is the purpose/ function of the park?** Previously described as primarily a 'sitting' park or 'transitional park for users from adjacent areas
- **Interactive park** – through art installations, performances or other art-based design approaches
- **Consider this area an Arts Avenue**, how does this park tie all the arts elements together?
- **Possible art walk opportunity**, or gateway feature. See Olympic Art Park example in Seattle
- **Zones for each kind of art:** dance, visual, sound; how do these inform design features of the park?

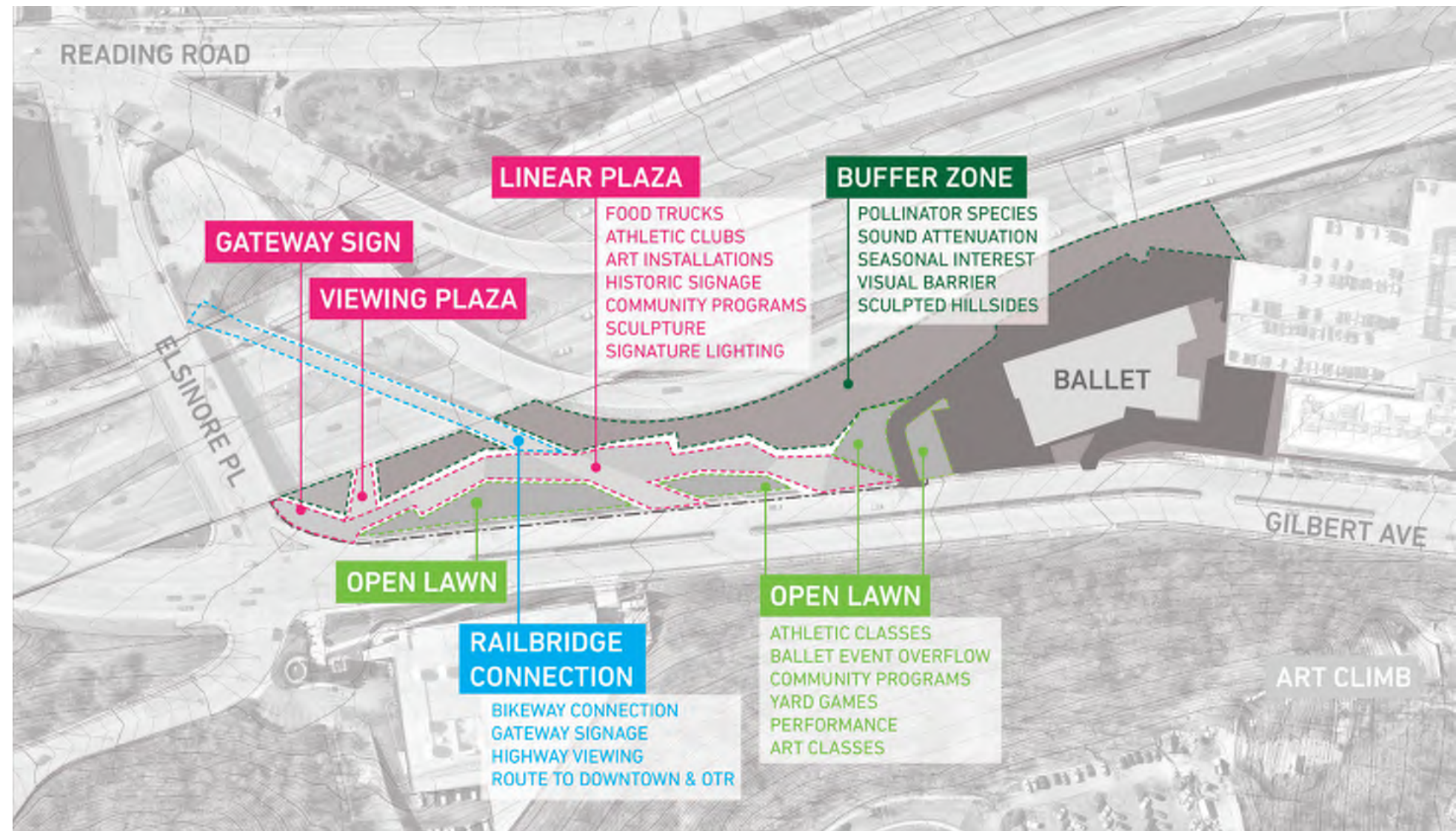
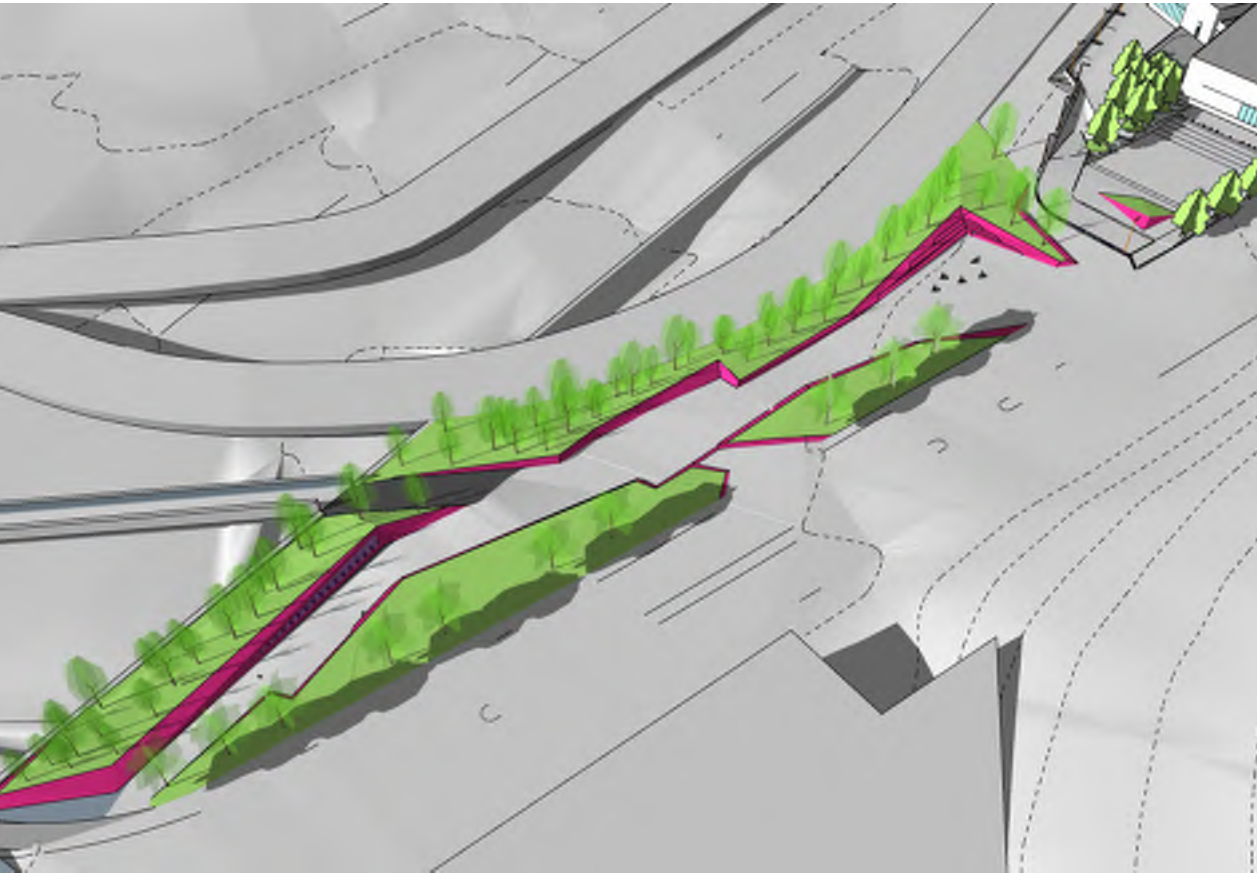
Incorporate historical context

- **Consider historical context** of adjacent Baldwin piano building, Elsinore Arch, Cincinnati Art Museum and Eden Park history
- **What is history of the name** behind Johnston Park? Parks to research further and share
- **Look at 1880's and 1920's planning efforts** of Eden Park/ Gilbert for design inspiration/ reference
- **Historically the art Museum Gilbert hillside** was not a primary wooded area— it was a graceful lawn and carriage approach. So the facing on to Gilbert and activation are historically accurate.

03

Previous
Concept

Previous Concept



04

Design
Refinement

Design Drivers

JOHNSTON PARK DESIGN DRIVERS

MAKE IT CONNECTED

Johnston Park is to be a significant part of the Eden Park Arts Loop, a pathway linking downtown, Walnut Hills and Mt. Adams to the park and its many cultural assets.

MAKE IT RELAXING

The park will be a green respite and stopping place. It will be a place to observe life go by, a place to meet people and watch performances or participate in programs and events in an intimate space.

MAKE IT AN APERTURE

Visitors can stroll through a promenade, sit in the shade, enjoy views of the Cincinnati Art Museum and the hillsides of Eden Park and view dance happening at the adjacent Cincinnati Ballet Center and its plaza.

MAKE IT A PASSAGE

The park will serve the purpose of launching people on a walking loop to take in the arts institutions in and around Eden Park and uniquely including repurposing a former railroad trestle into a new pedestrian bridge from the park to Downtown and the Pendleton and Mt. Auburn neighborhoods.

MAKE IT AN ENTRYWAY

And the park is to be a “front door” to the Walnut Hills and Mt. Adams neighborhoods. The Elsinore Place overpass serves as a vehicular, pedestrian and bicycle portal between many neighborhoods on either side of Interstate 71, and Johnston Park serves as a welcoming gesture from both directions.

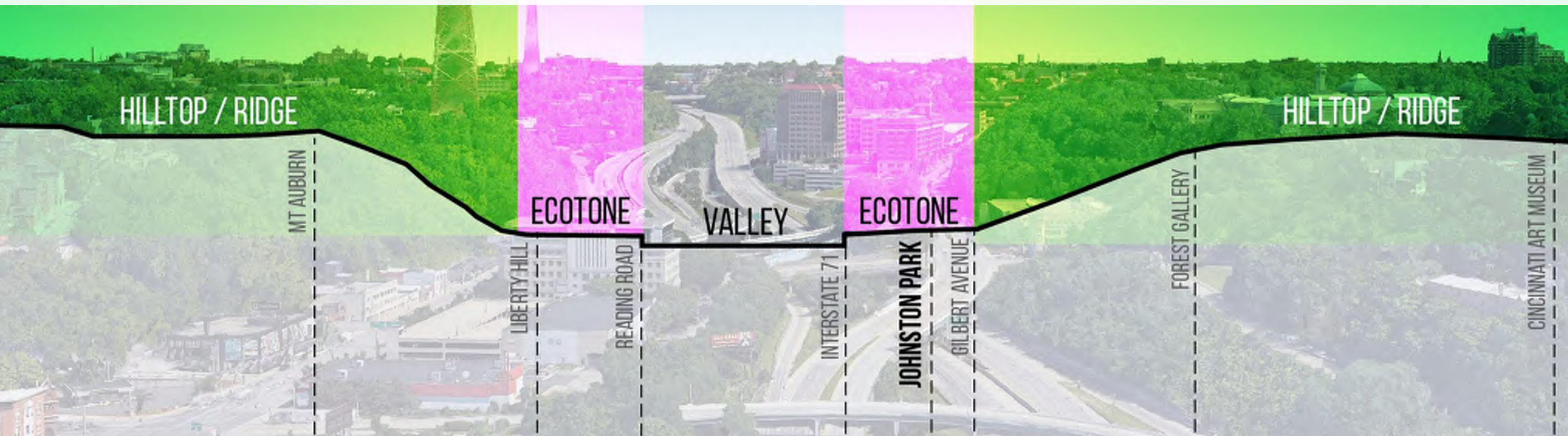
MAKE IT GREEN/SUSTAINABLE

Complementing the adjacent tree covered hillside of the Cincinnati Art Museum and the Art Climb, Johnston Park will provide additional tree canopy extending the parklike setting found throughout the Eden Park Arts Loop. Native plantings will extend the parks transformation as a performative landscape, providing pollinator areas, seasonal interest, wildlife habitat, and green stormwater management. Will be built and planted to be sustainable, durable, and simple to maintain.

MAKE IT INCLUSIVE

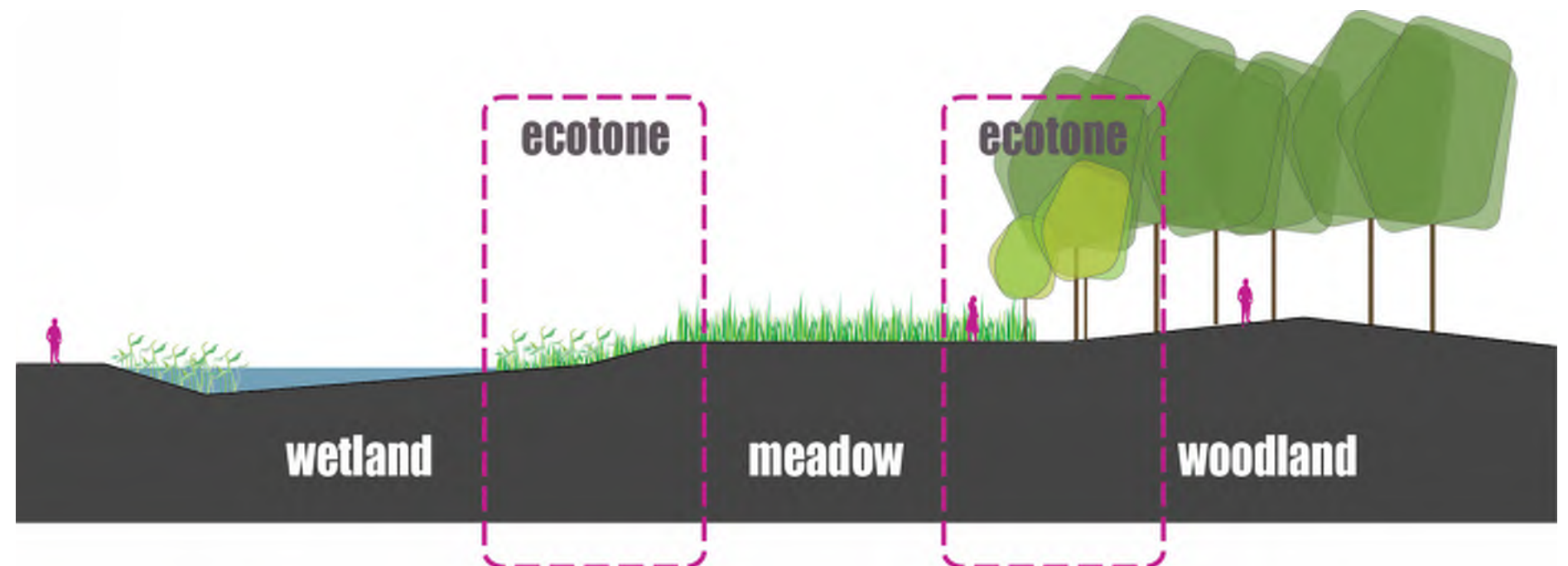
A welcoming place that is universally accessible and designed for all ages.

Hills and Valleys



Ecotone:

A transition between two biomes, where two communities meet and integrate. May appear as a gradual blending of the two communities across a broad area, or it may manifest itself as a shared boundary line.



Site Location



Site Context



Neighborhoods

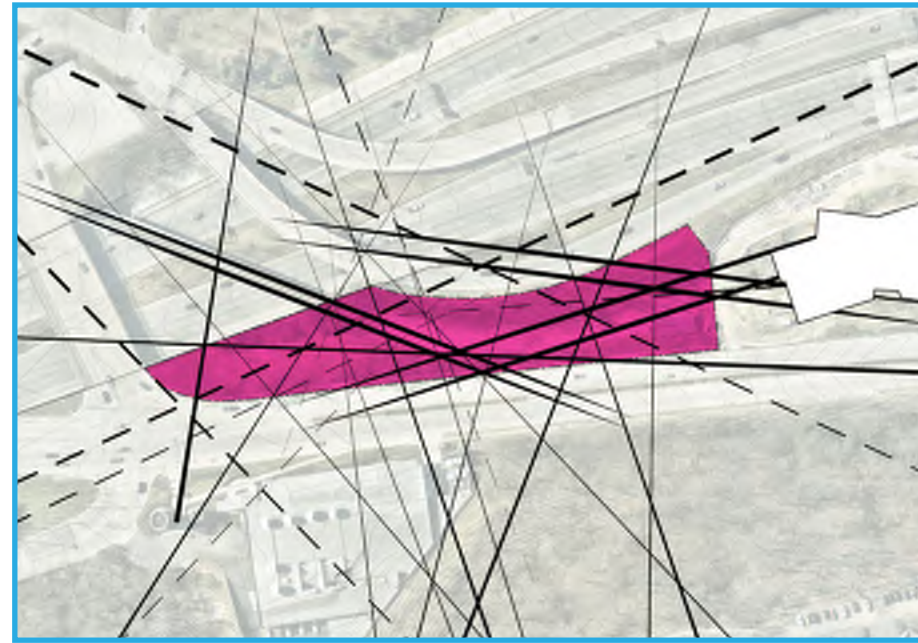


Points of Interest

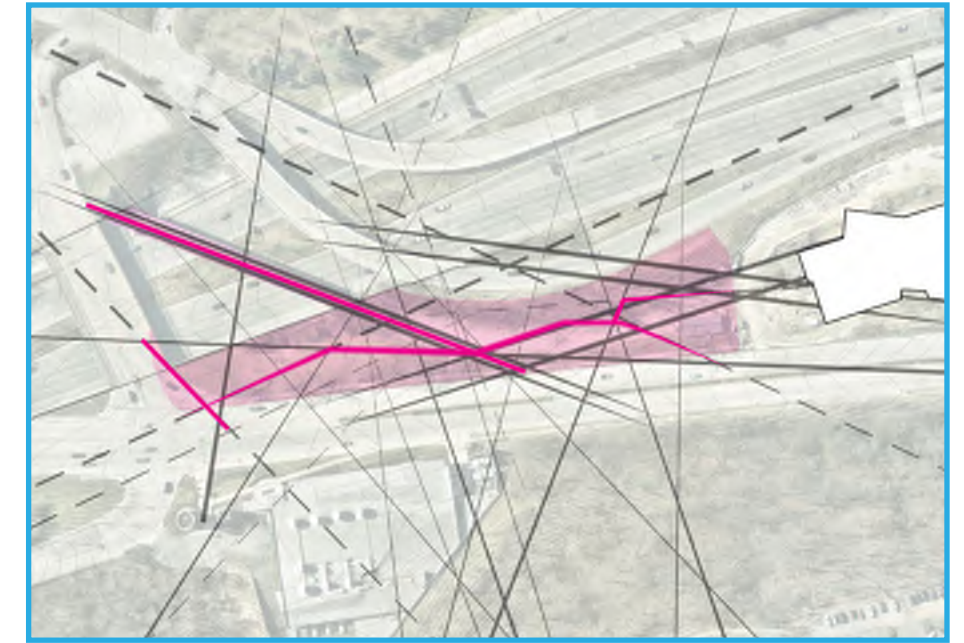
Building the Diagram



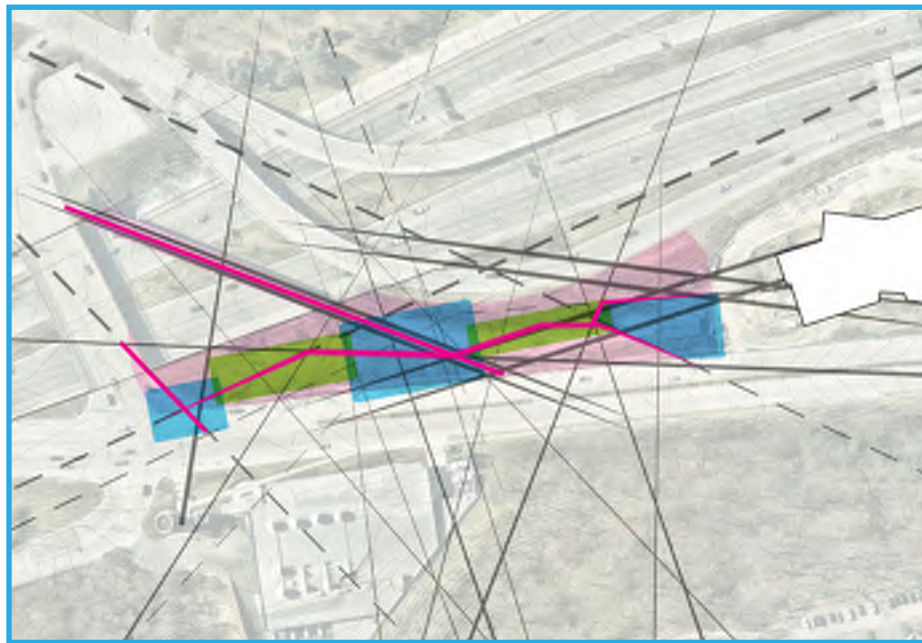
Site Lines



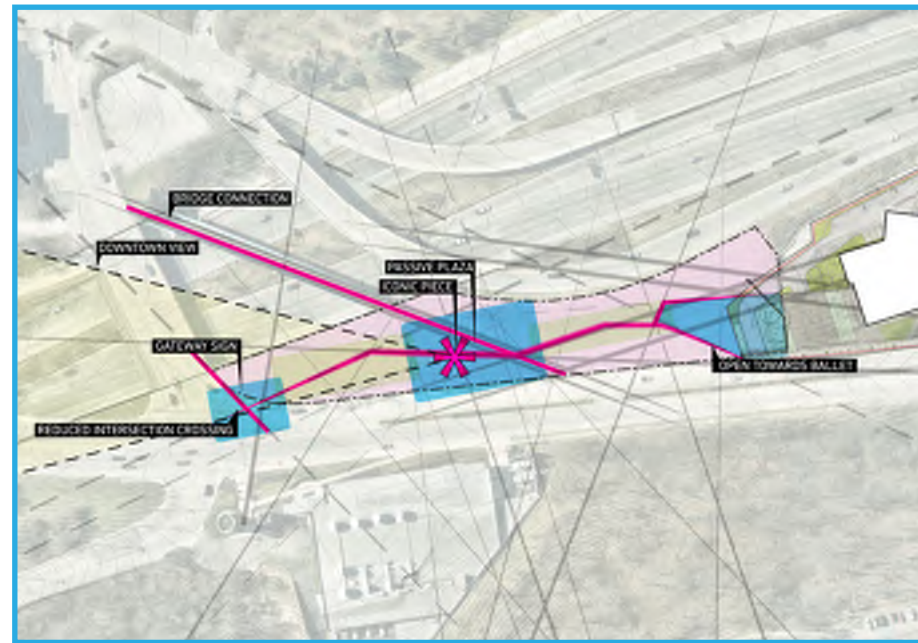
The Site is an Aperture



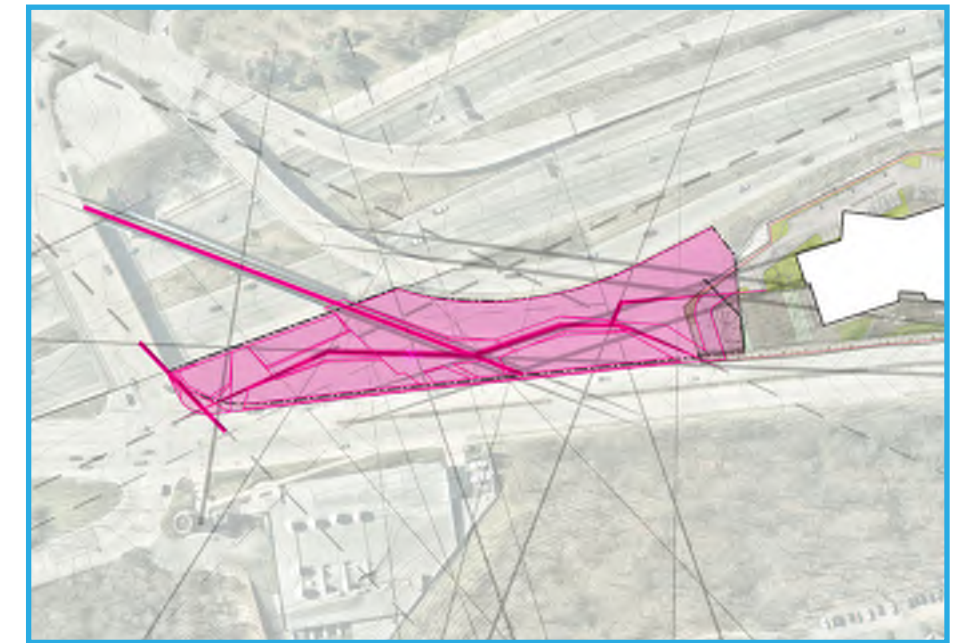
The Site is a Passage



Setting a Rhythm



Park Programs

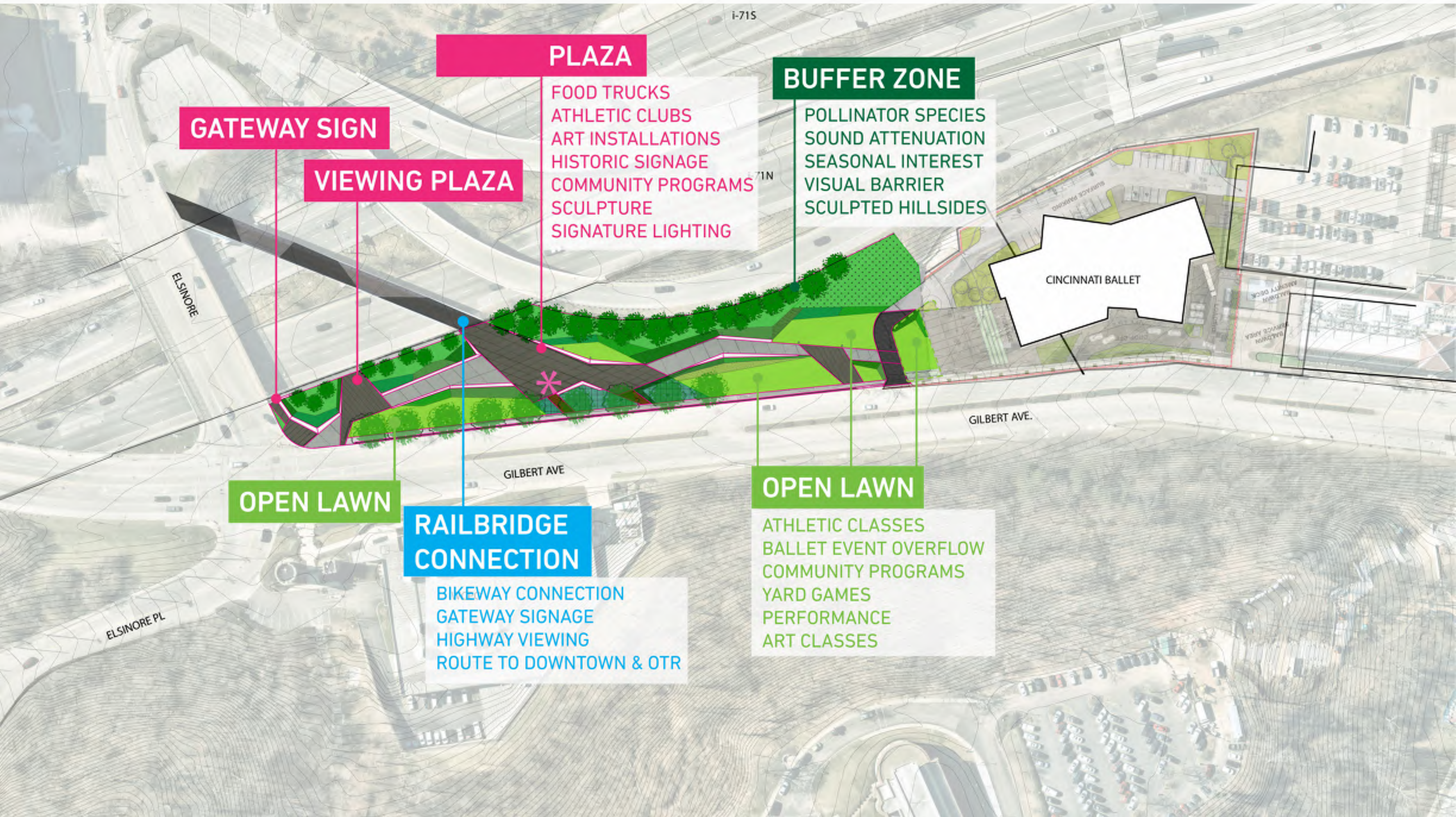


Creating Spaces

Site Plan



Program



GATEWAY SIGN

VIEWING PLAZA

PLAZA

FOOD TRUCKS
ATHLETIC CLUBS
ART INSTALLATIONS
HISTORIC SIGNAGE
COMMUNITY PROGRAMS
SCULPTURE
SIGNATURE LIGHTING

BUFFER ZONE

POLLINATOR SPECIES
SOUND ATTENUATION
SEASONAL INTEREST
VISUAL BARRIER
SCULPTED HILLSIDES

OPEN LAWN

**RAILBRIDGE
CONNECTION**

BIKEWAY CONNECTION
GATEWAY SIGNAGE
HIGHWAY VIEWING
ROUTE TO DOWNTOWN & OTR

OPEN LAWN

ATHLETIC CLASSES
BALLET EVENT OVERFLOW
COMMUNITY PROGRAMS
YARD GAMES
PERFORMANCE
ART CLASSES

CINCINNATI BALLET

Views Out of Park



Pedestrian Bridge



Pedestrian Bridge



Park Entrance



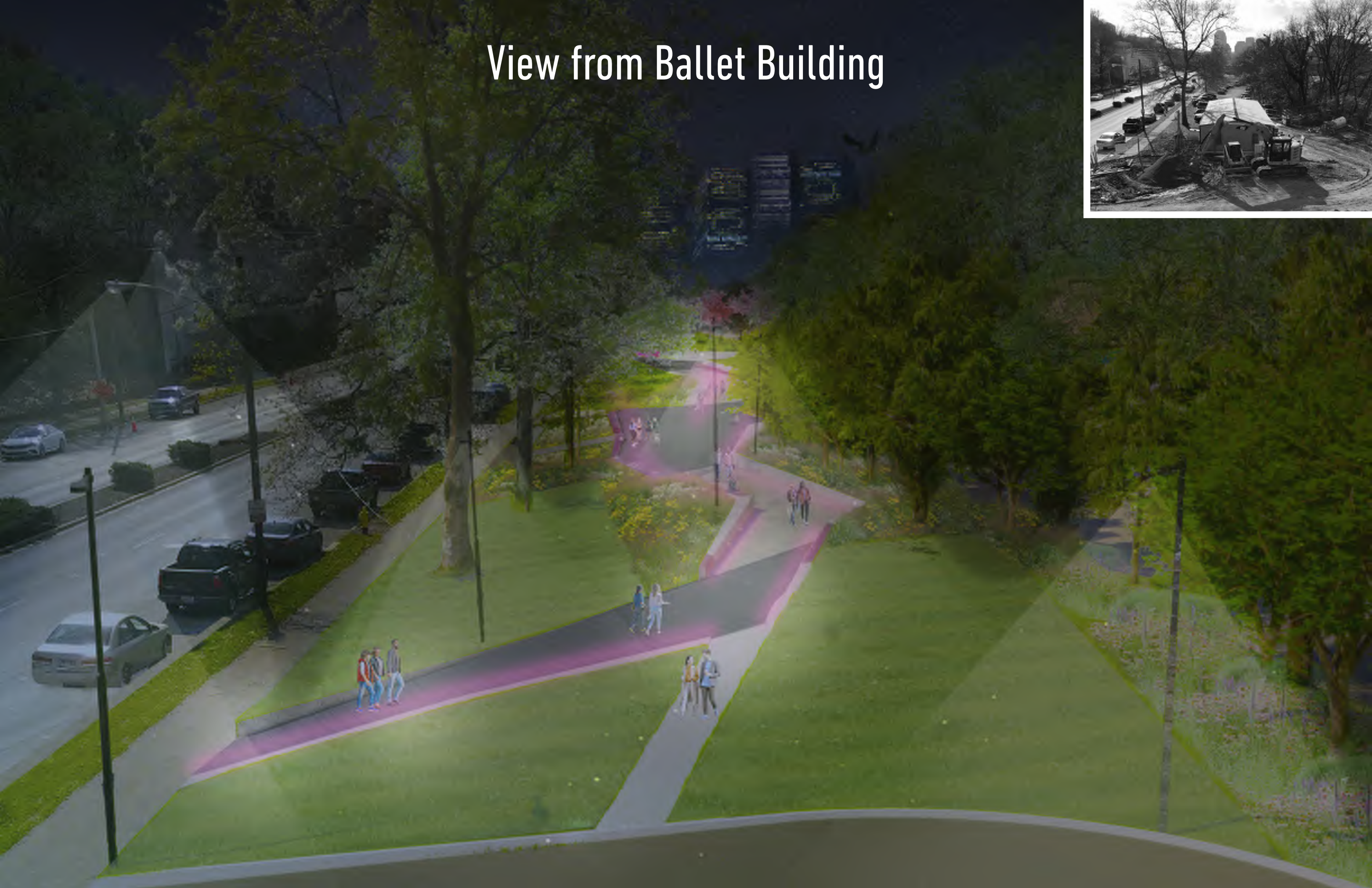
Plaza



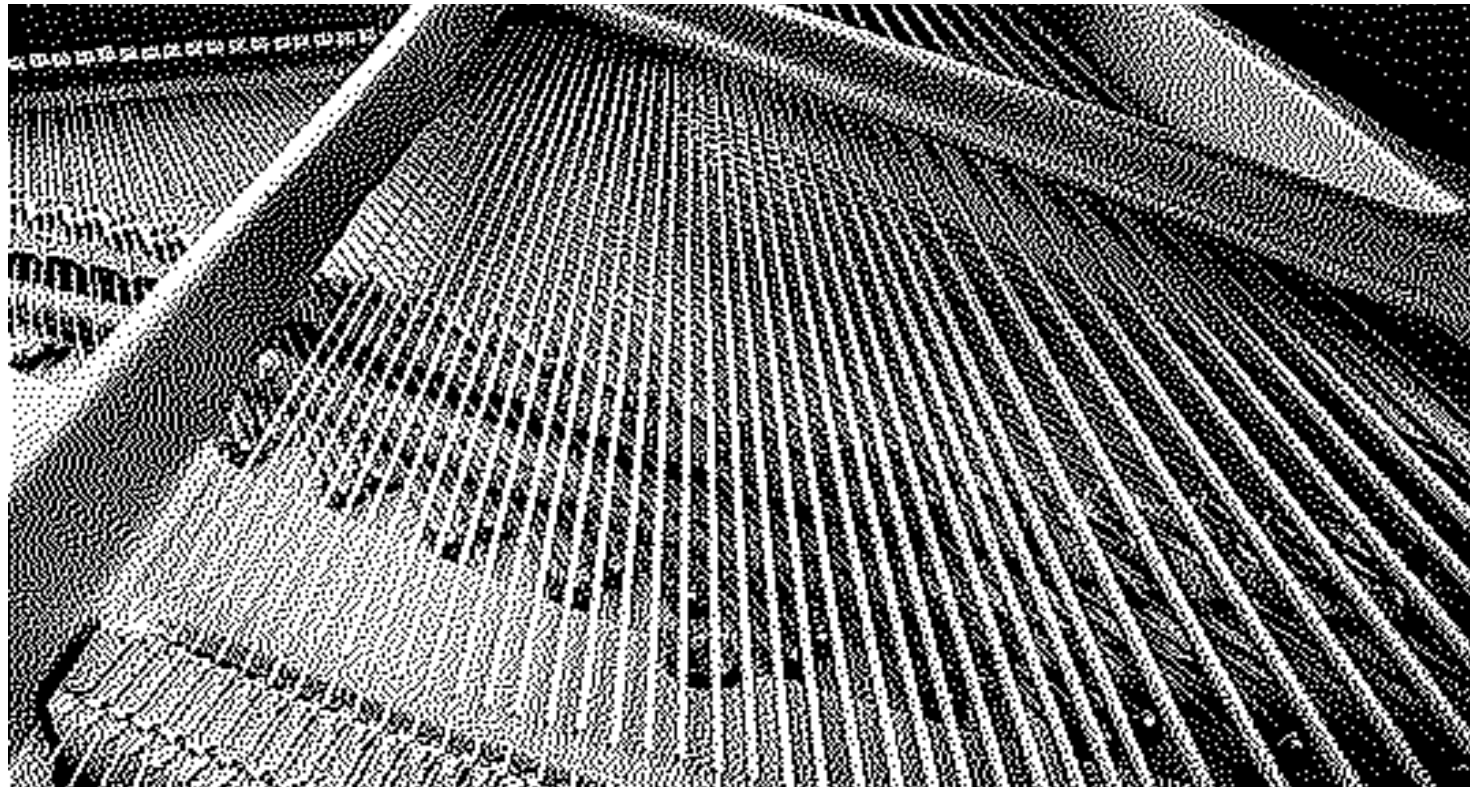
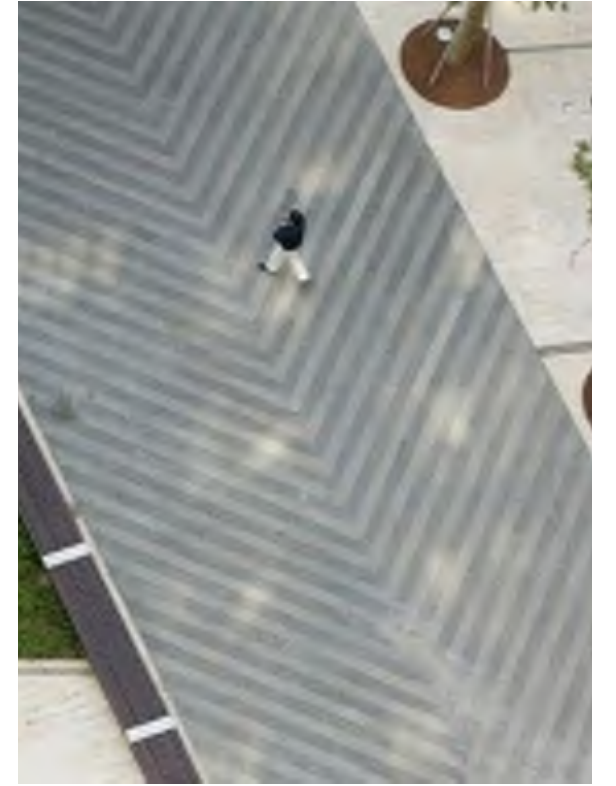
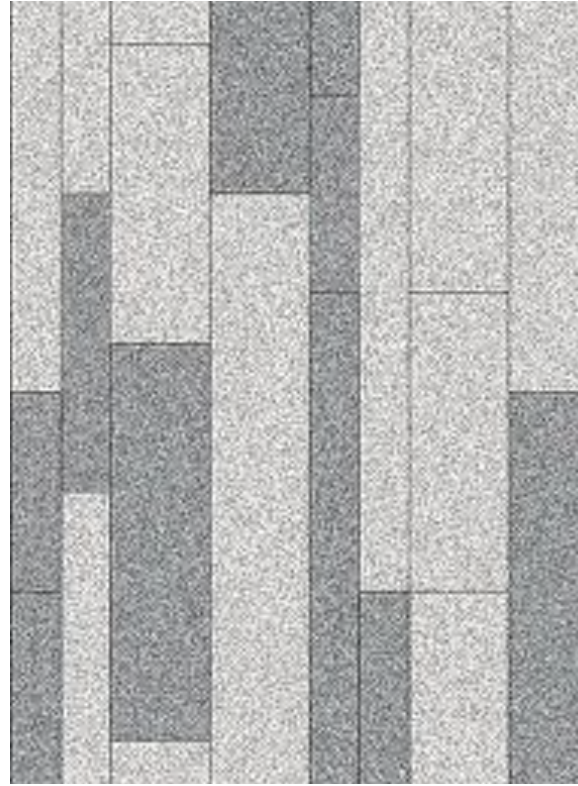
View from Ballet Building



View from Ballet Building

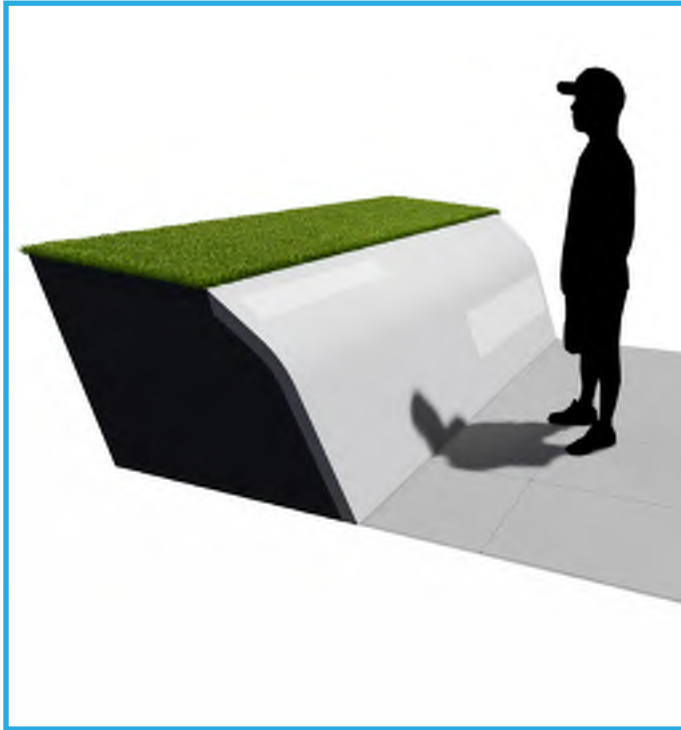


Paving Studies

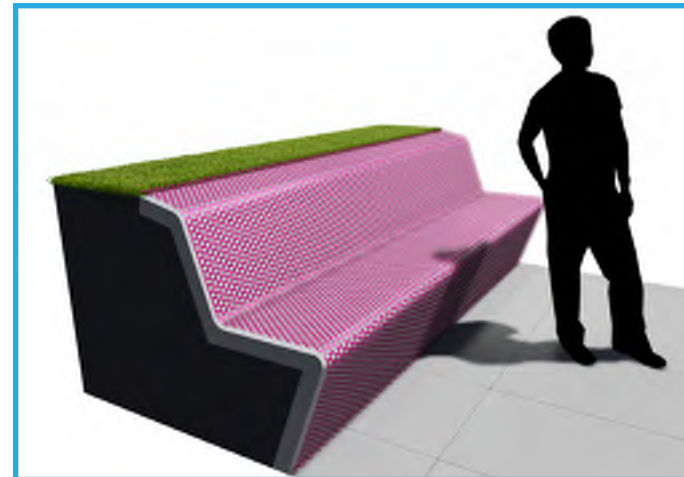


Wall, Bench, and Curb Studies

Tall Wall



Backed Bench



Bench



Curb



MKSK